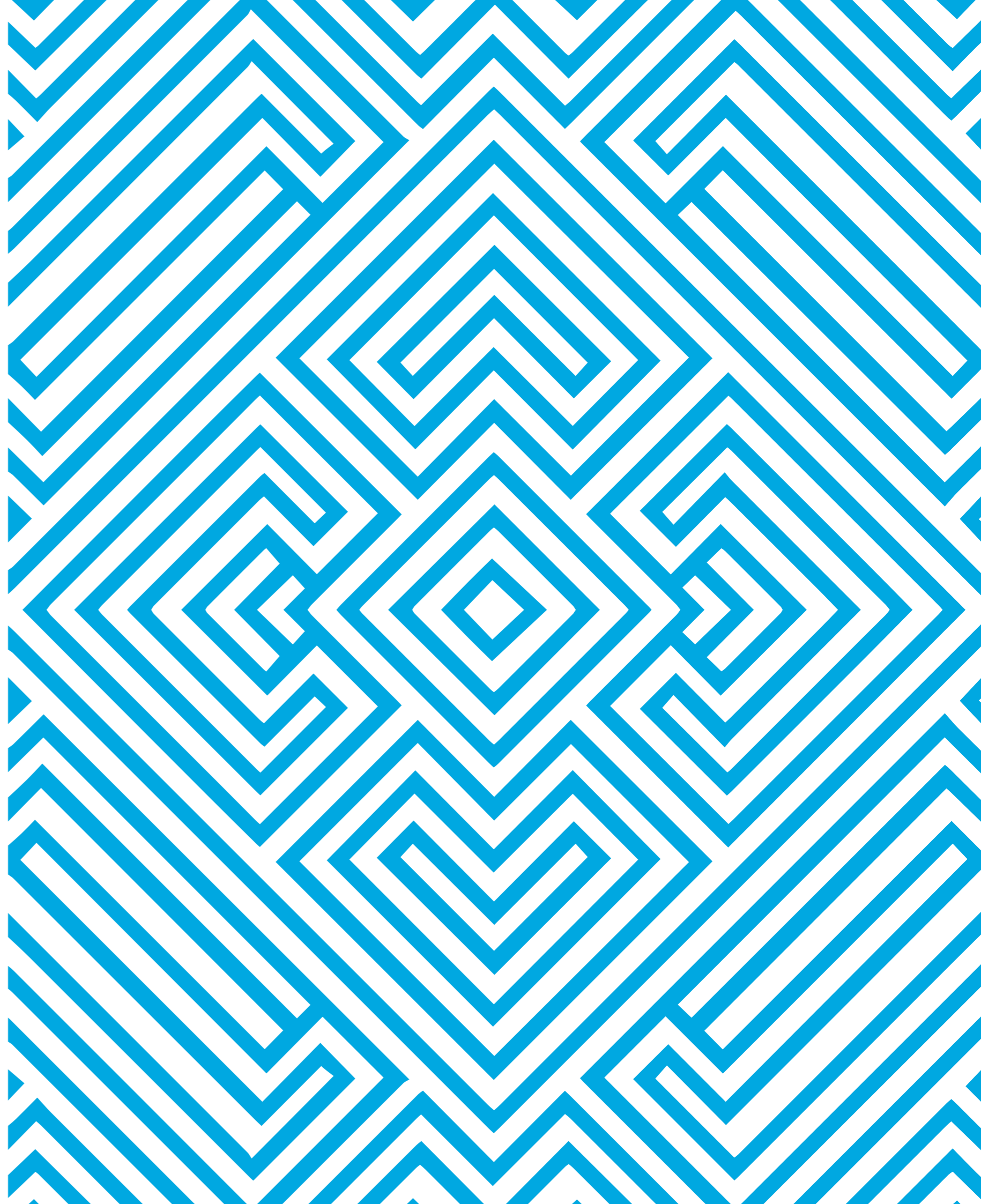




HYDE PARK
NEW CAIRO

C4 TOWN HOUSES

...THERE ARE MANY INTRICATE SHADES TO THE HUMAN SPIRIT THAT ENLIGHTEN OUR UNIQUE JOURNEY THROUGH LIFE, CONSTANTLY CHANGING WHO WE ARE, BEAUTIFULLY DEFINING WHAT WE BECOME. AT HYDE PARK, WE CAPTURE THIS INSPIRATION THROUGH WORLD-CLASS ARCHITECTURE, DILIGENTLY THOUGHT-OUT DESIGN AND GREEN SPACE AS FAR AS THE EYE CAN SEE, THAT WE BELIEVE REFLECTS A LITTLE OF YOU. ALLOW US TO TAKE YOU ON OUR JOURNEY.

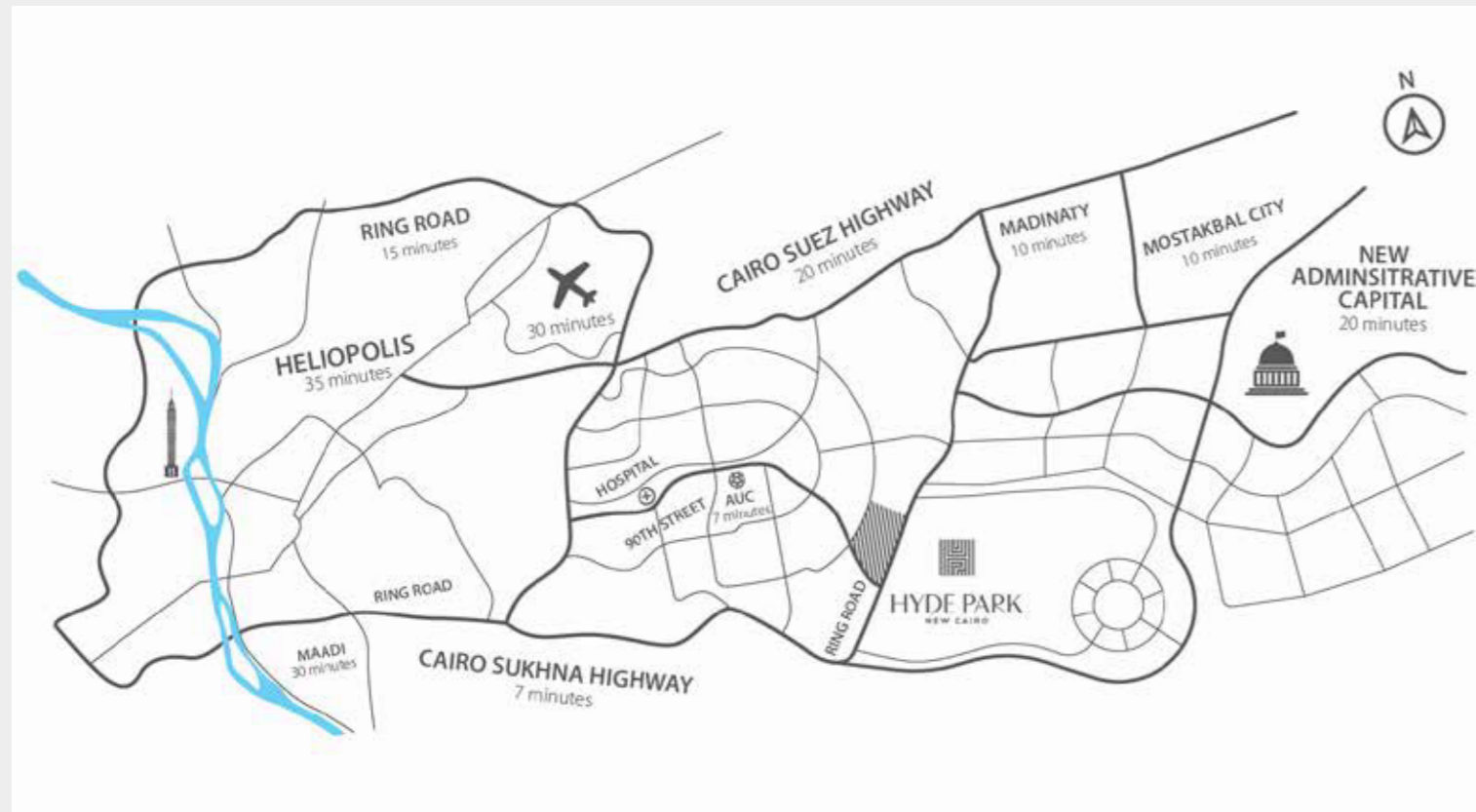


LOCATION MAP

Inherent in our exciting blueprint to life is a vision to create one of the largest, integrated communities in New Cairo. Using leading architects, landscapers and top-tier design houses, Hyde Park will be a smart, mixed-use development spanning across 6 million square meters and meticulously arranged with exclusive residential, commercial and leisure facilities surrounding the park – over 6 hundred thousand square meters – the largest of its kind in Cairo.

Welcome to new living in its fullest sense; international schools, Mosques, luxury hotels, business offices, a medical facility and three club houses located in different districts in the masterplan, offering facilities including a spa, fitness center, kids area and multi-use sports courts.

Park Avenue offers an unprecedented mix of shopping, dining and recreation, and is one of the largest commercial spaces in Egypt with a total commercial, leisure and entertainment area of 130 thousand square meters. Park Avenue hosts over one thousand mixed-size commercial units to cater for the widest range of activities.

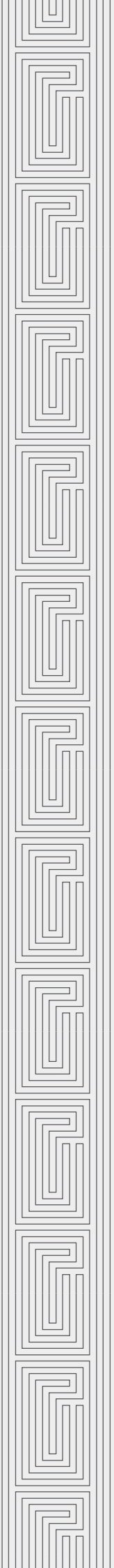


MASTERPLAN



TOWN HOUSES

C4 TWIN HOUSES LOCATION





GROUND FLOOR | C4 TOWN HOUSES

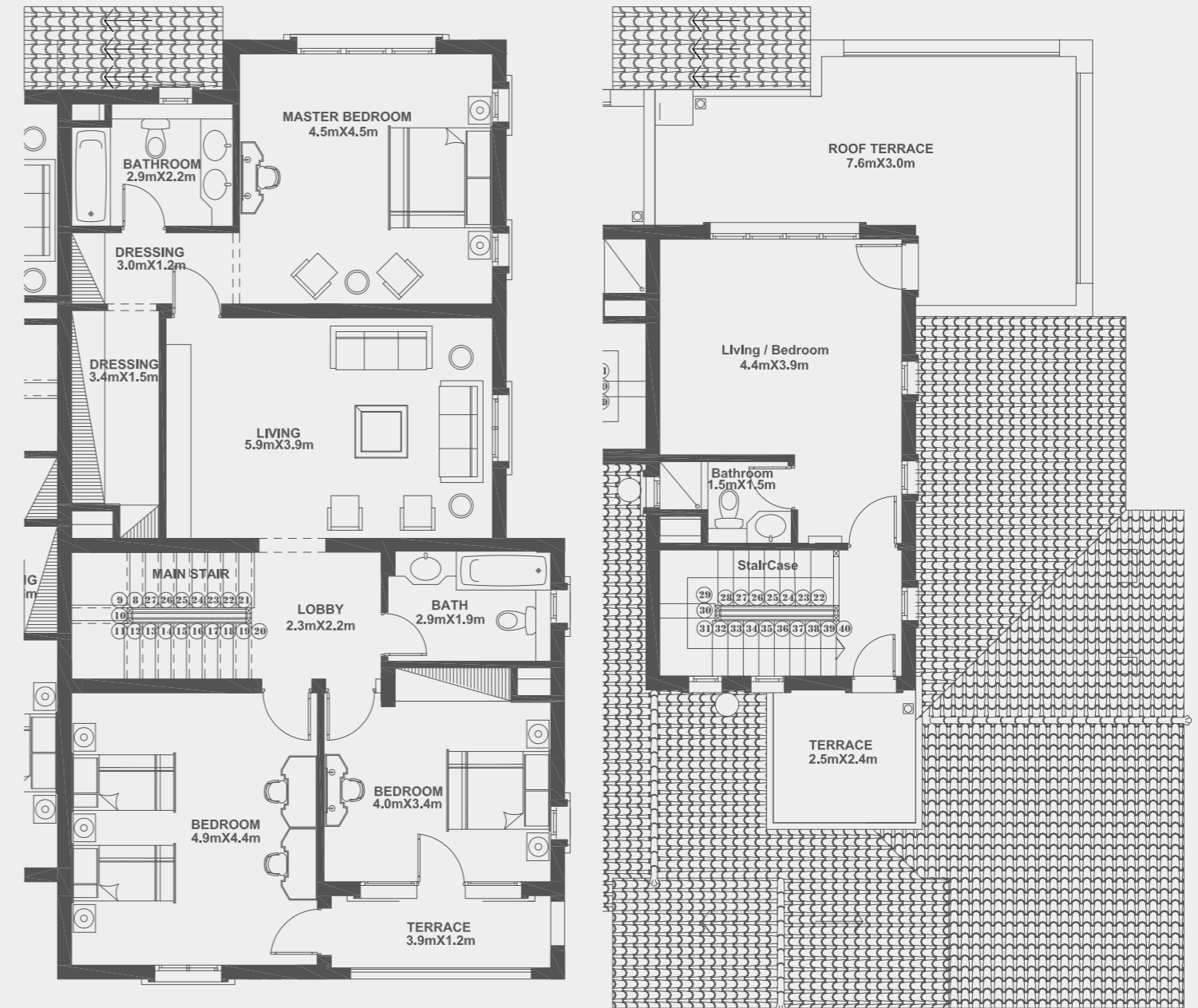
TYPE B

TOTAL BUA	316 M ²
GROUND FLOOR	135 M ²



TYPE B

FIRST FLOOR	140.5 M ²
ROOF FLOOR	40.5 M ²

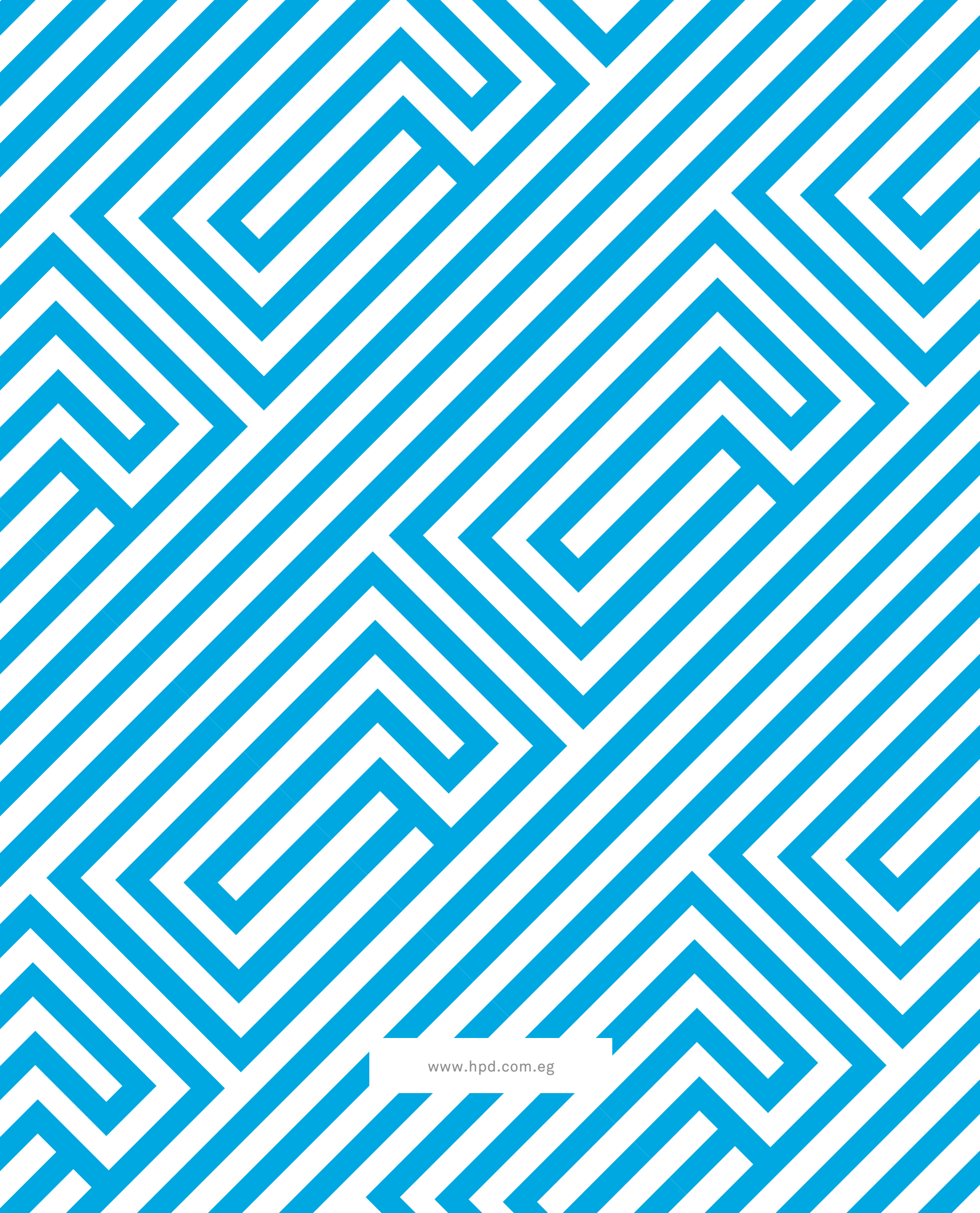


DISCLAIMER:

All renders and visual materials are for illustrative purpose only. Actual areas may vary from the stated figures. All dimensions are measured to structural elements. HPD reserves the right to make minor modifications without prior notice.

DISCLAIMER:

All renders and visual materials are for illustrative purpose only. Actual areas may vary from the stated figures. All dimensions are measured to structural elements. HPD reserves the right to make minor modifications without prior notice.



www.hpd.com.eg